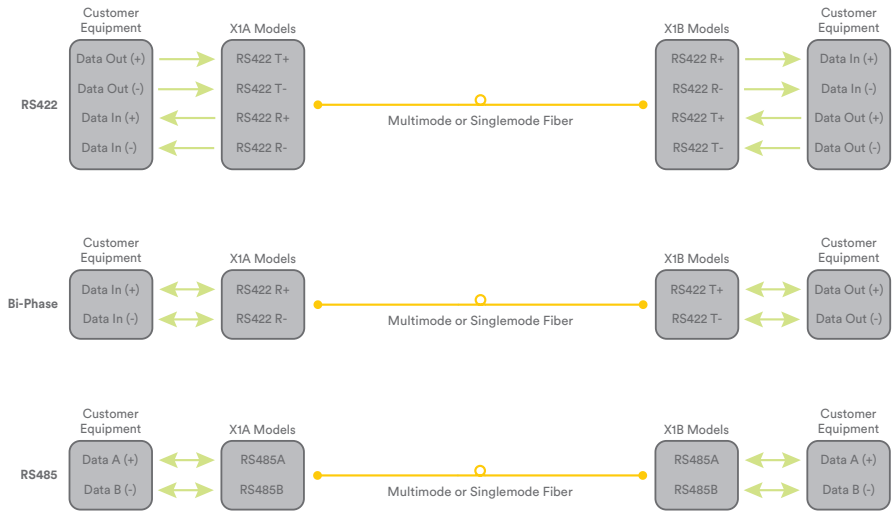


/ SERIAL DATA CONNECTIONS



Serial Data Specifications.

Data Channels	1x RS422 / Bi-Phase
	1x RS485
Data Rate:	115kb/s Max
Termination:	External Resistor

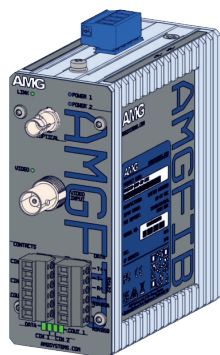


# AMGFIB-1/2V-1SD-3CC Series

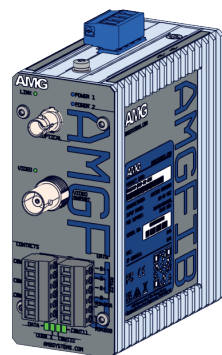
## Industrial Video, Data & Contact Closure

Installation Manual - Hardware

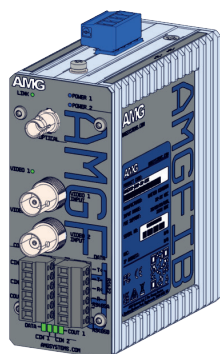
## / AVAILABLE MODELS



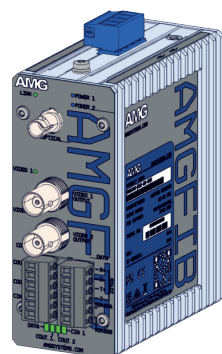
AMGFIB-1VT-1SD-3CC-M1A  
AMGFI-1VT-1SD-3CC-S1A



AMGFIB-1VR-1SD-3CC-M1B  
AMGFI-1VR-1SD-3CC-S1B

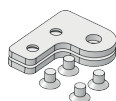


AMGFIB-2VT-1SD-3CC-M1A  
AMGFI-2VT-1SD-3CC-S1A

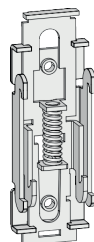


AMGFIB-2VR-1SD-3CC-M1B  
AMGFI-2VR-1SD-3CC-S1B

## / INCLUDED ACCESSORIES

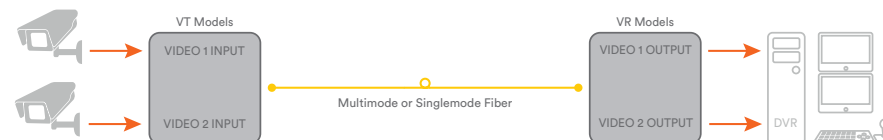


2 x Wall Mounting Brackets



DIN Rail Bracket

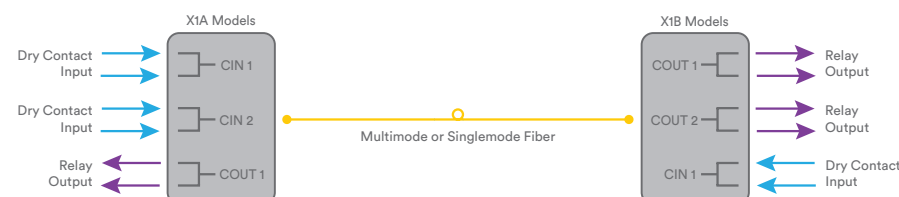
## / VIDEO CONNECTIONS



### Video Specifications.

Video Channels	1 or 2 (depending on the model ordered)
Compression	None, Uncompressed
In/Out Impedance	75Ω (Unbalanced)
Video Input Level	>500mV pk-pk
Video Output Level	1V pk-pk
Bandwidth	30MHz (720p), 60MHz (1080p), 150MHz (1960p)
Video Format	CVBS (PAL/NTSC/SECAM), SD, HD, 2MP, 3MP, 4MP, 5MP
Signal To Noise	>60dB (Weighted 8-Bit)

## / CONTACT CLOSURE CONNECTIONS



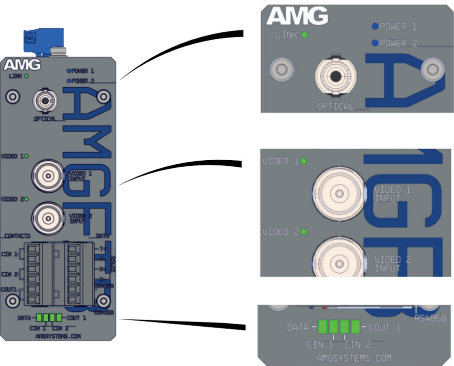
### Contact Closure Specifications.

Contact Channels	2x Simplex In A to B Direction 1x Simplex In B to A Direction
Inputs	Dry
Outputs	Form A Relays
Output Rating	30V <sub>DC</sub> @ 1A Max 240V <sub>AC</sub> @ 0.25A Max

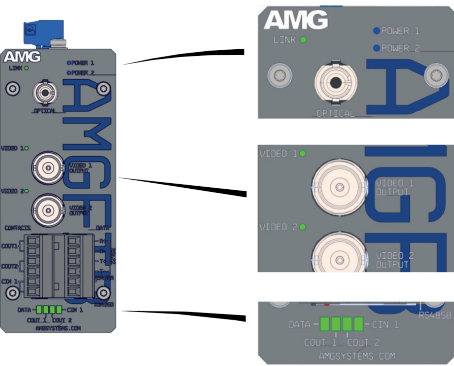


**Warning**  
Applying a voltage to the Dry Contact  
Inputs will damage the unit

/ LED INDICATORS



x1A Models

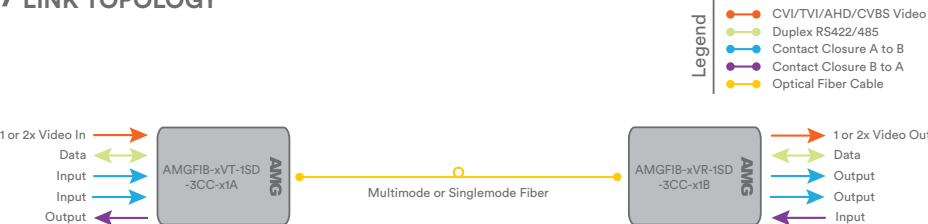


x1B Models

LED	Colour	Description
POWER 1	Blue	Power 1 Active
POWER 2	Blue	Power 2 Active
LINK	Off	No Optical Link
	Green	Good Optical Link
VIDEO 1 VIDEO 2	Off	No Video Signal
	Green	Good Video Signal
CIN1 CIN2	Off	Contact Input Open
	Green	Contact Input Closed
COUT1	Off	Relay Output Open
	Green	Relay Output Closed
DATA	Off	No Data Signal
	Green	Good Data Signal

LED	Colour	Description
POWER 1	Blue	Power 1 Active
POWER 2	Blue	Power 2 Active
LINK	Off	No Optical Link
	Green	Good Optical Link
VIDEO 1 VIDEO 2	Off	No Video Signal
	Green	Good Video Signal
CIN1	Off	Contact Input Open
	Green	Contact Input Closed
COUT1 COUT2	Off	Relay Output Open
	Green	Relay Output Closed
DATA	Off	No Data Signal
	Green	Good Data Signal

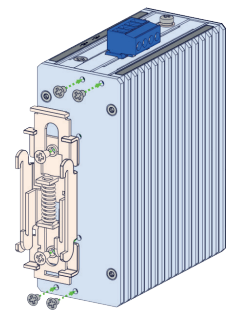
/ LINK TOPOLOGY



/ DIN RAIL MOUNT INSTALLATION

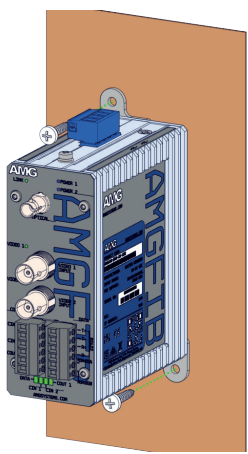
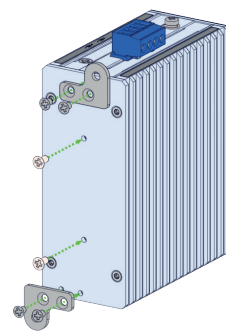


/ SURFACE/WALL MOUNT INSTALLATION



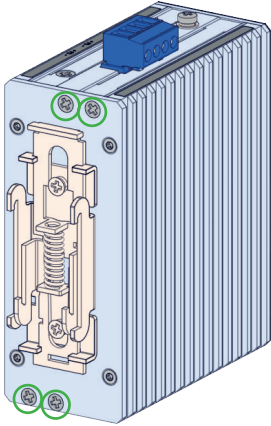
① Remove the DIN rail clip by unscrewing the two fixing screws as shown.

② Attach the included wall mount brackets with the provided 4 x M3 screws as shown.

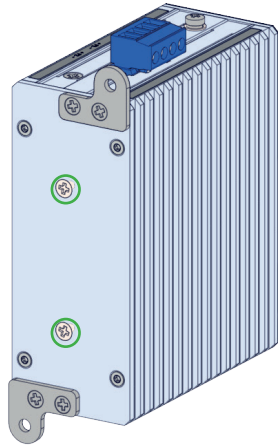


③ Fix the unit to the surface using two appropriate screws (screws not provided)

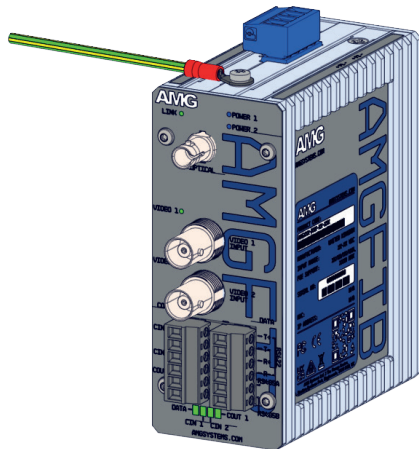
/ IP RATING



To maintain the units IP40 rating any screw holes that are not used should still have their screws installed as shown in green below.



/ EARTH PROTECTION

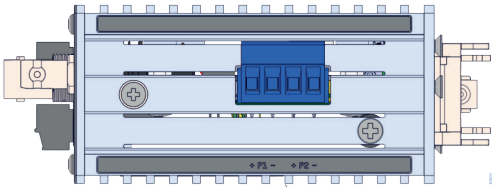


To provide correct protection from ESD and Surge events ensure that the unit is correctly earthed using the provided earth connection point in accordance with local electrical codes & standards. (cable not provided)

/ POWER

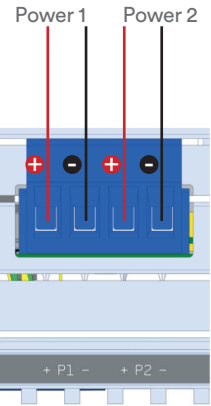


**Warning**  
Do not exceed the rated voltage  
Observe correct voltage polarity



Power Input	Voltage
P1	9-36VDC or 18-36VAC
P2	9-36 VDC

Power	3.5W Max
-------	----------



/ INTERFACE CONNECTIONS

- ① Insert the optical patch cable into the optical connector.
- ② Connect BNC video cable(s) to the one or two BNC connectors (depending on model).
- ③ Connect cables to the 3x contact closure channels as required.
- ④ Connect cables to the RS422 or RS485 data channel as required.

