



Installation Instructions

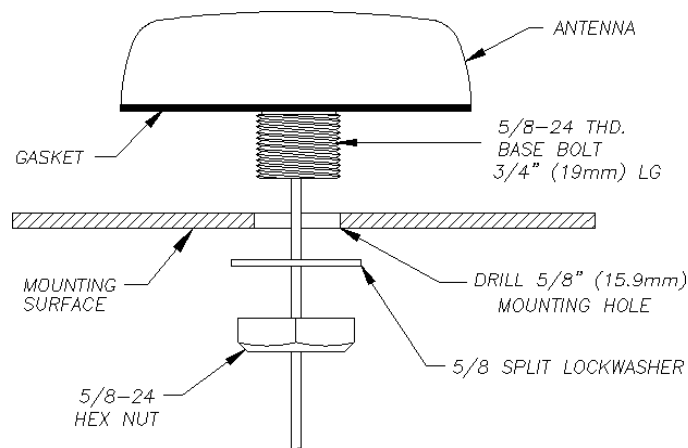
Surface Mount GPS Only Antenna

Models Covered: AMGANT-G1-ODA5 Series

Installation Guidelines

The SM-1575 is low profile GPS only antenna that measures 2 ½ inches (63.5mm) in diameter and is supplied with all necessary mounting hardware and a sealing gasket. Access to the underside of the body surface is required to complete the installation.

For optimum GPS performance the antenna should be mounted on a horizontal surface with an unobstructed view of the sky.



Installation Steps

The SM-1575 has a 3/4 inch (19mm) long Base Bolt and can be mounted on surfaces up to ½ inch (12.7mm) thick

To mount the SM-1575 GPS antenna, a 5/8 inch (15.9 mm) hole must be drilled or punched into the surface. Debur the sharp edges of the mounting hole to avoid damaging the cable and make sure the mounting surface is clean.

To attach the antenna, first remove the Hex Nut and the Split Lockwasher. Feed the cable through the mounting hole, seat the antenna on the surface, and then reattach the Lockwasher and the Hex Nut. Use a torque wrench to tighten the nut to a maximum of 5 ft-lbs (6.7 Nm). Next, feed the cable to the equipment.

The attached gasket provides a seal to prevent moisture from entering the vehicle. For uneven surfaces, silicone may be added around the base of the antenna.

Note: If the underside of the threaded Base Bolt is exposed, a sealant is required to prevent moisture from entering the Base Bolt.

Tools Suggested

- Electric Drill
- Hole Saw 5/8" (15.9mm) or Hole Punch 5/8" Torque
- Wrench 5ft-lbs (6.7Nm)