


# AMG255-T Series Industrial Media Converter

Installation Manual - Hardware

Proud to be a British  
Manufacturer 

AMG Systems Ltd. 3 The Omega Centre, Stratton Business Park, Biggleswade, SG18 8QB, UK  
T :: +44 (0) 1767 600 777 E :: sales@amgsystems.com  
D33352-00 www.amgsystems.com

**AMG**

**AMG**  
www.amgsystems.com

**AMG255**

## / AMG255-T SERIES INCLUDED ACCESSORIES

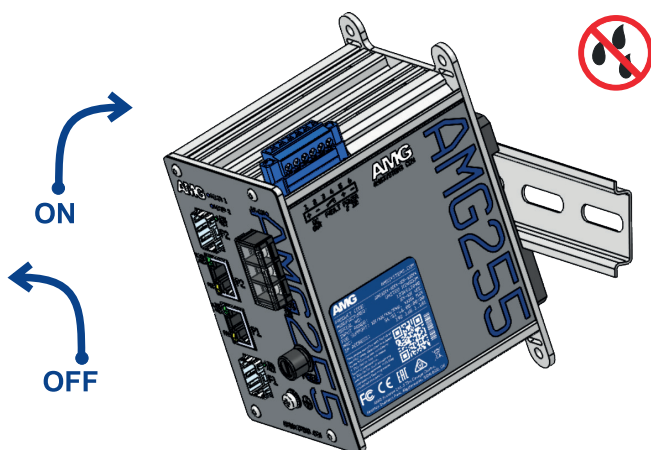


AMG255-T Media Converter

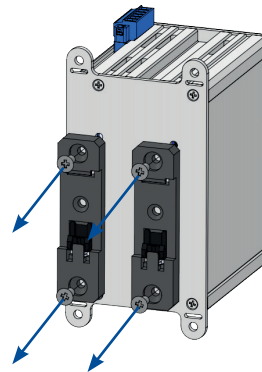


2 x DIN Rail Mounting Clips

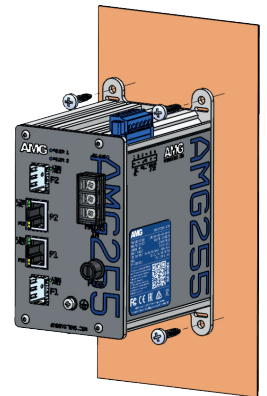
## / DIN RAIL MOUNT INSTALLATION



## / SURFACE MOUNT INSTALLATION

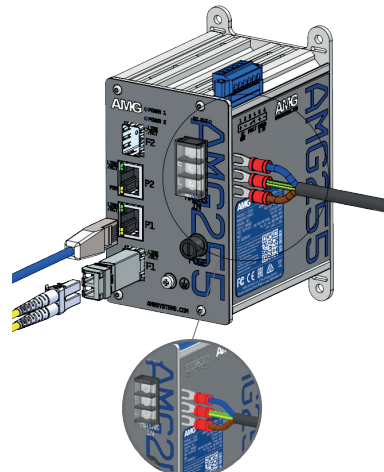


① Remove 2 x DIN rail clips by unscrewing the four fixing screws as shown.



② Fix the unit to the surface using four appropriate screws (not provided)

## / MAINS POWER INTERFACE



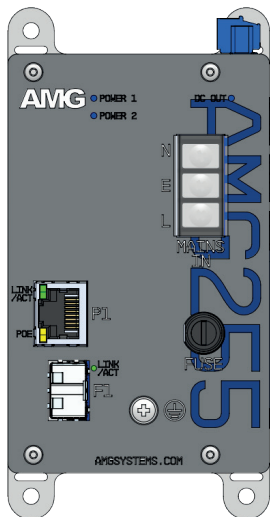
Mains Input	
Input Connector	Terminal
Input Voltage	85-264 VAC or 100-370 VDC

Fuse	
3.15A/250V Slow-Blow	



**Warning High Voltage**  
Do not open product housing  
No user servicable parts inside

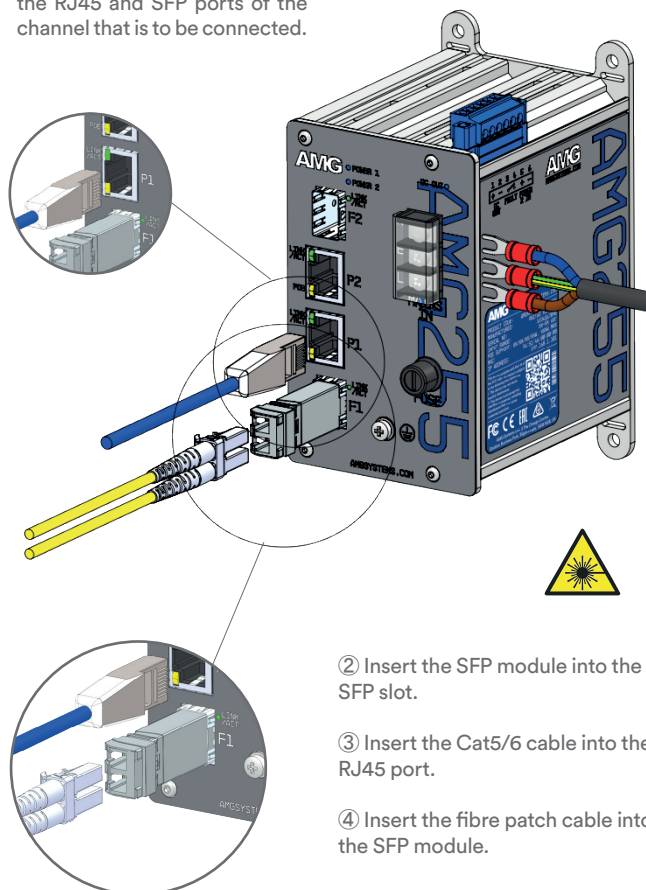
## LED INDICATORS



LED	Colour	Description
POWER 1	Blue	DC input present from mains psu
POWER 2	Blue	DC input present from power 2
DC OUT	Blue	Internal mains power supply ok
SFP LINK/ACT	Off	No SFP link connection
	Green	SFP link present (flashes with data traffic activity)
RJ45 LINK/ACT	Off	No Ethernet link connection
	Green	Ethernet link present (flashes with data traffic activity)
POE	Off	No PoE being supplied
	Yellow	PoE is being delivered on the port

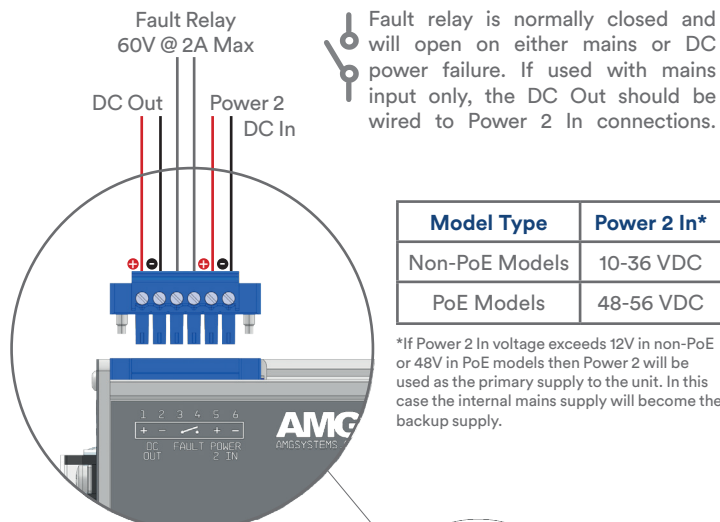
## RJ45 & SFP INTERFACE CONNECTIONS

① Remove the dust caps from the RJ45 and SFP ports of the channel that is to be connected.



- Insert the SFP module into the SFP slot.
- Insert the Cat5/6 cable into the RJ45 port.
- Insert the fibre patch cable into the SFP module.

## SCREW TERMINAL INTERFACE CONNECTIONS



Model Type	Power 2 In*
Non-PoE Models	10-36 VDC
PoE Models	48-56 VDC

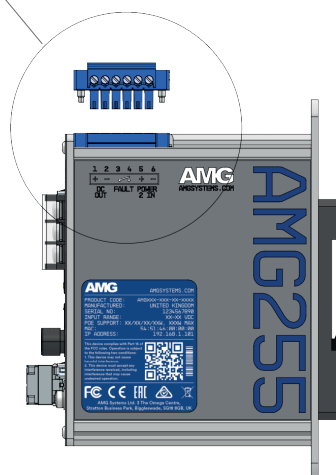
\*If Power 2 In voltage exceeds 12V in non-PoE or 48V in PoE models then Power 2 will be used as the primary supply to the unit. In this case the internal mains supply will become the backup supply.

Model Type	DC Out
Non-PoE Models	12 VDC
PoE Models	48 VDC

Model Type	Internal PSU Size*
Non-PoE Models	20W
PoE Models	60W

Any power not used by the device itself can be used to power 3rd party equipment connected to the DC OUT terminals.

\*Refer to the de-rating charts on the product data sheet for available power vs temperature.



## PORT SPEEDS

Example part code:

**AMG255-2GAT-2S-P60**

Character	RJ45 Port Speed	SFP* Port Speed
F	10/100 Base-T(X)	100/1000 Base-FX
G	10/100/1000 Base-T(X)	

\*SFP's supplied separately. Refer to AMG SFP Datasheet for available models

## POE CAPABILITIES

Example part code:

**AMG255-2GAT-2S-P60**

Characters	PoE Standard Supported	Characters	PoE Budget
None	Non-PoE Model	P30	30W Max
AT	IEEE 802.3at 30W Per Port	P60	60W Max

Check the product label to determine the PoE power supported on each port and the units total maximum PoE budget.



If Power 2 DC input is being used ensure PSU size is at least equal to the maximum PoE budget figure.

### IEEE 802.3at Models

Type 1 & 2 PoE supported  
Mode A PSE only